

CH

CAROLINA HERRERA

- *AVENOIR* -

n. the desire that memory could flow backward.

CH

CAROLINA HERRERA

CONCEPT //

Inspired in the finesse, sensuality, femininity and seductive power of the brand since its inception, the AVENOIR capsule collection invites you to dream of new beginnings, allowing yourself to feel the warmth of past memories while letting your mind shift towards what lies ahead.



FRESH AIR



NEW BEGINNINGS



INNOCENCE



SENSUALITY



WARMTH



FINESSE



SHIFT



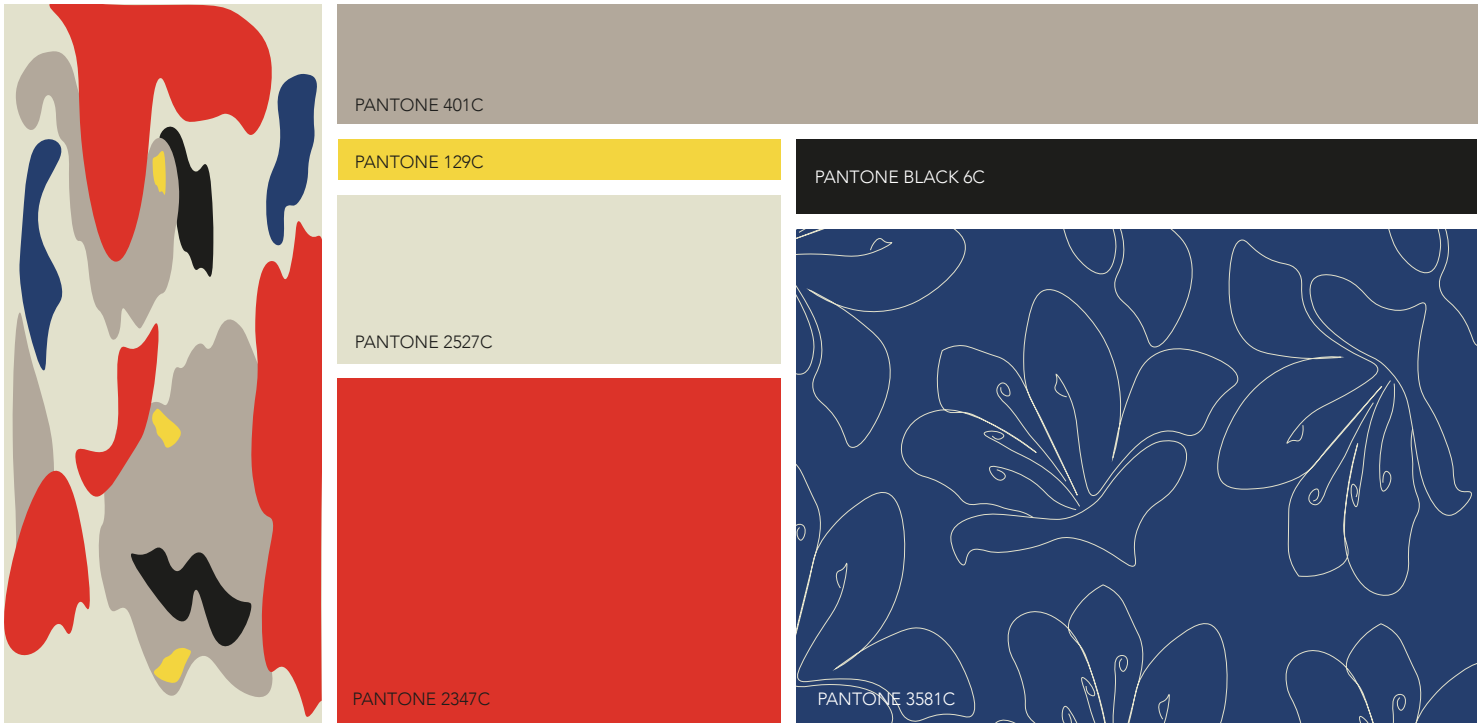


CAROLINA HERRERA

COLOR PALETTE //

Inspired in the main three characteristic colours of the brand: RED, BLACK AND WHITE, two shades of unsaturated browns and a vivid blue and yellow are added to the collection aiming to create a well balanced harmony among all of them, while making the classic RED stand out.

Keep being sensitive, life screams. Delicacy is a forgotten art.





THE COLLECTION //

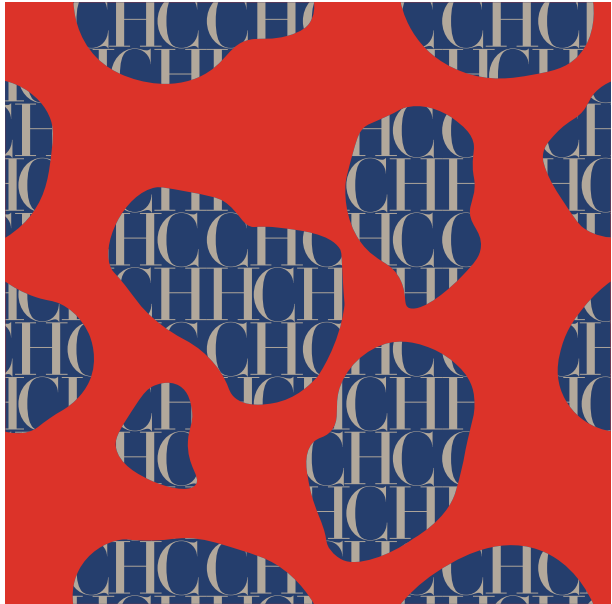


CH

CAROLINA HERRERA

PRINTS & PLACEMENTS //

RAPPORT



102.5MM



PANTONE 2347C



PANTONE 3581C

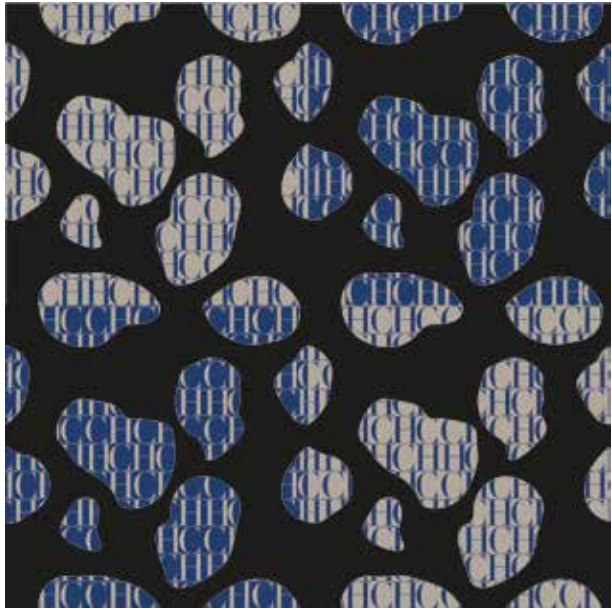


PANTONE 2527C

102.5MM



RAPPORT



205MM

205MM



PANTONE BLACK 6C



PANTONE 3581C



PANTONE 401C





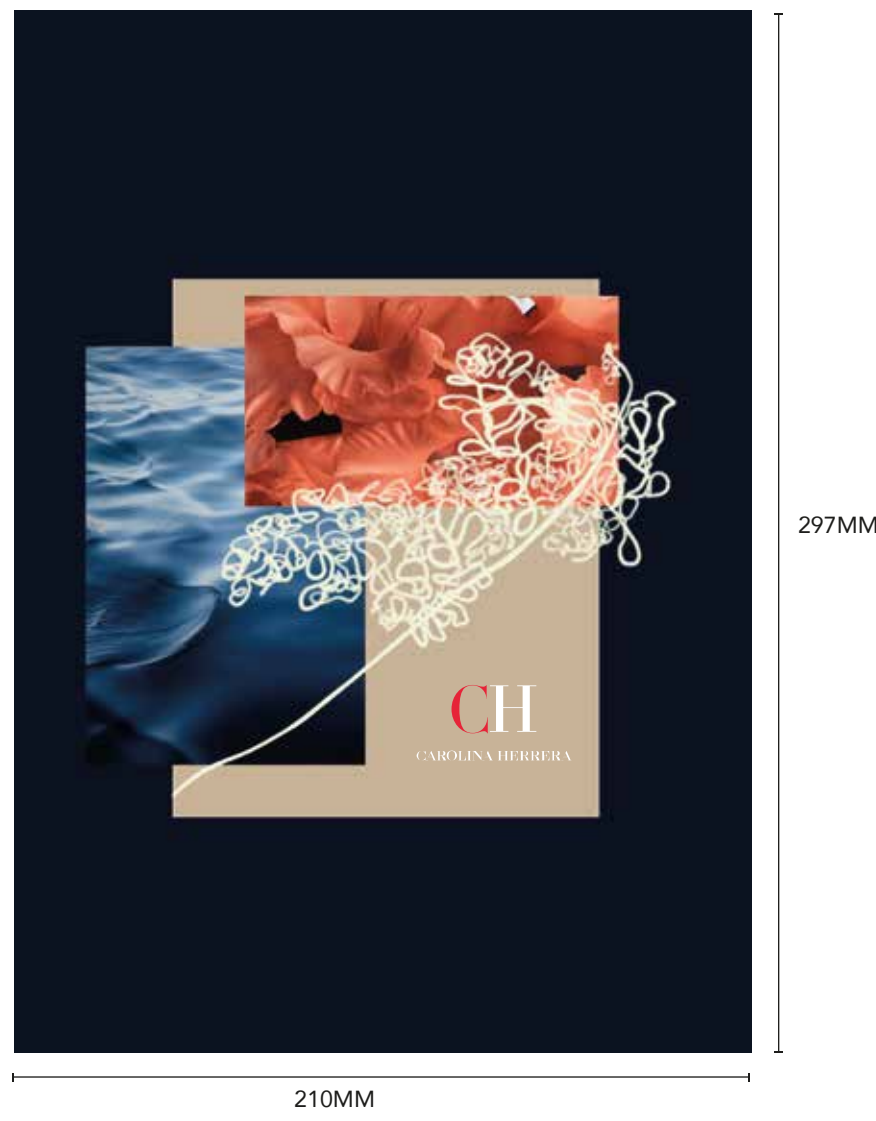
105MM

148MM



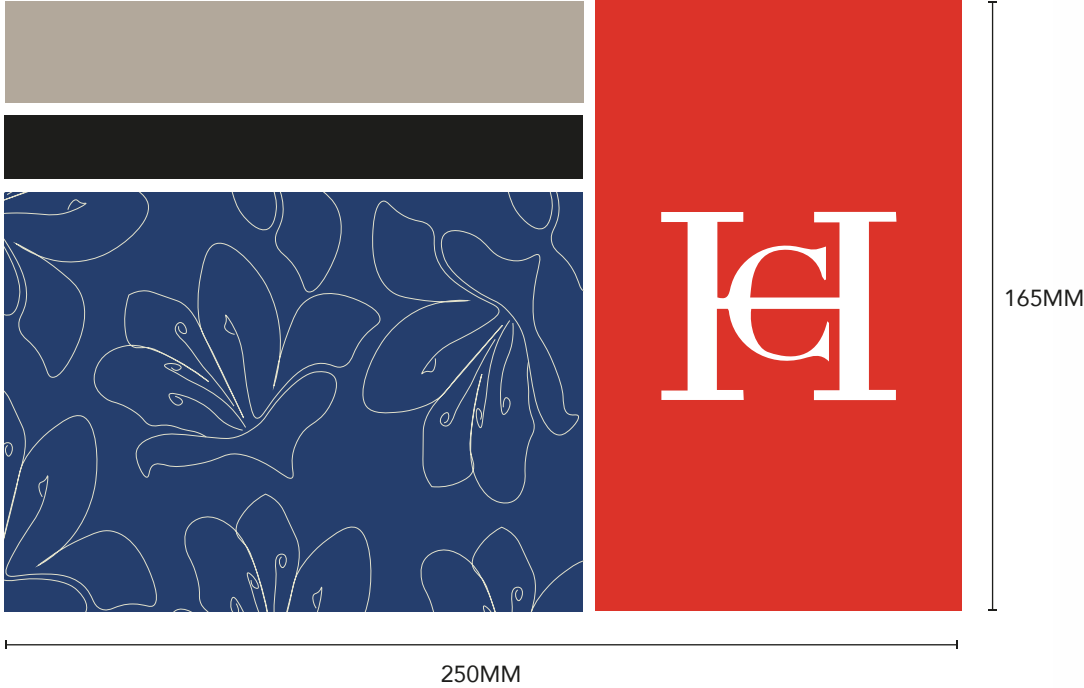
PLACEMENT I //

EMBROIDERED



PLACEMENT II //


DIGITAL PRINT



CH

CAROLINA HERRERA

TECHNICAL SHEET //

 CAROLINA HERRERA	COLLECTION: AVENOIR		WOMENSWEAR KNITWEAR	
	SEASON: 2022		REF. NO: TP_01	
LOOK 1 · GARMENT 1		SIZE: M	YARN REF:	TYPE OF GARMENT: KNITTED SHORT SLEEVED POLO SHIRT.
COLOUR REF: · Beige PANTONE 7527C	YARN REF: · 100% Cashmere beige wool · Intarsia camo printed 100% Cashmere wool	· Gütermann beige 299	TRIMMING: · Overlock · Regular stitch	ADD-ONS: · 3x 10mm beige buttons

DESCRIPTION:

Beige short sleeved knitted polo shirt buttoned on the front placket. Collar, sleeves and waistline are finished using a 2x1 intarsia rib in camo print.



FRONT



BACK

CH

CAROLINA HERRERA

COLLECTION: AVENOIR

SEASON: 2022

WOMENSWEAR KNITWEAR

REF. NO: TP_01

LOOK 1 · GARMENT 1

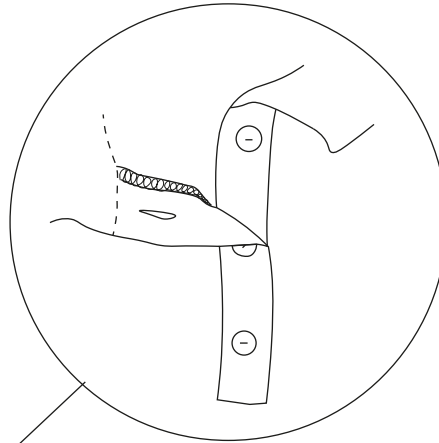
SIZE: M

TYPE OF GARMENT: KNITTED SHORT SLEEVED POLO SHIRT.

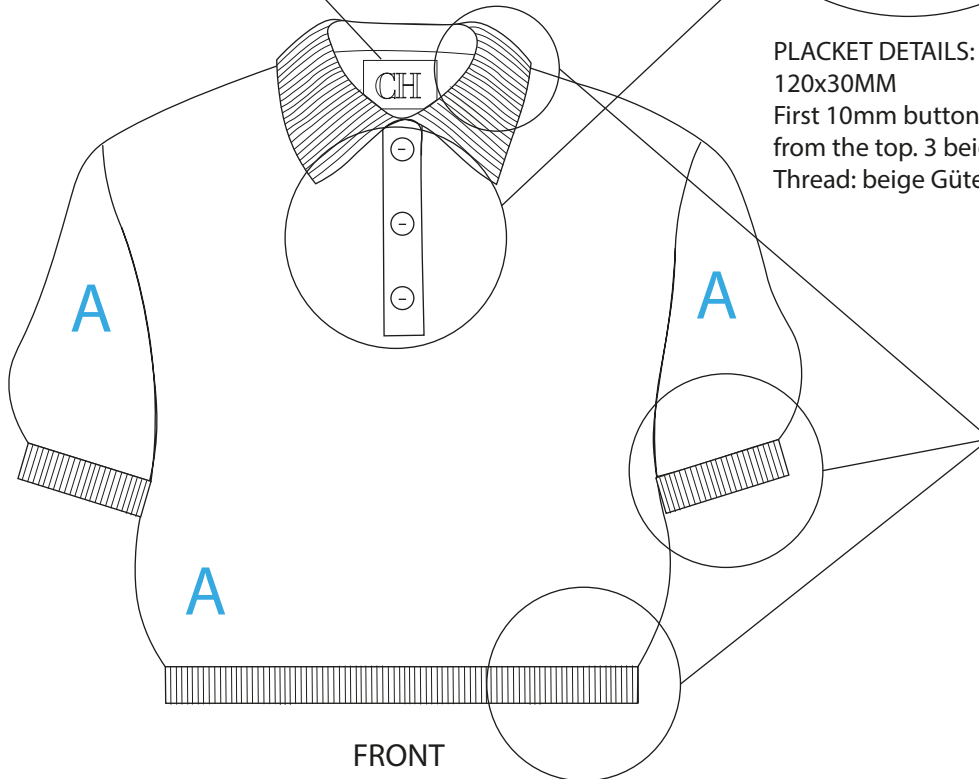
CONSTRUCTION GUIDELINES:



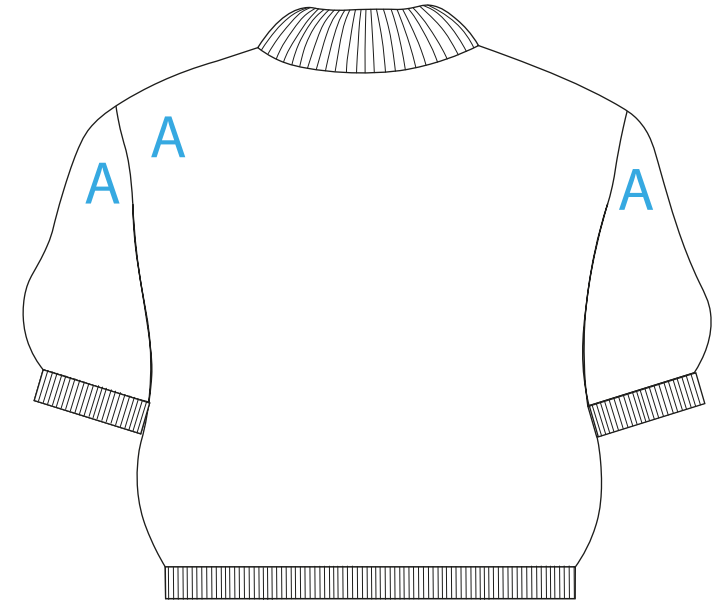
40x30MM COTTON TAG
CH embroidered
(approved logo in red and black)
Stitch the 4 corners by hand
Thread color: beige matching upper



PLACKET DETAILS:
120x30MM
First 10mm button start at 15mm
from the top. 3 beige buttons in total.
Thread: beige Gütermann 299



FRONT



BACK

B USE 2x1 RIB STITCH FOR COLLAR, SLEEVE ENDS AND WAISTLINE
(more details on the last page)

A USE REGULAR STITCH FOR THE FRONT AND BACK BODICE AND SLEEVES
SEW THE PIECES TOGETHER USING AN OVERLOCK MACHINE

CH

CAROLINA HERRERA

COLLECTION: AVENOIR

SEASON: 2022

WOMENSWEAR KNITWEAR

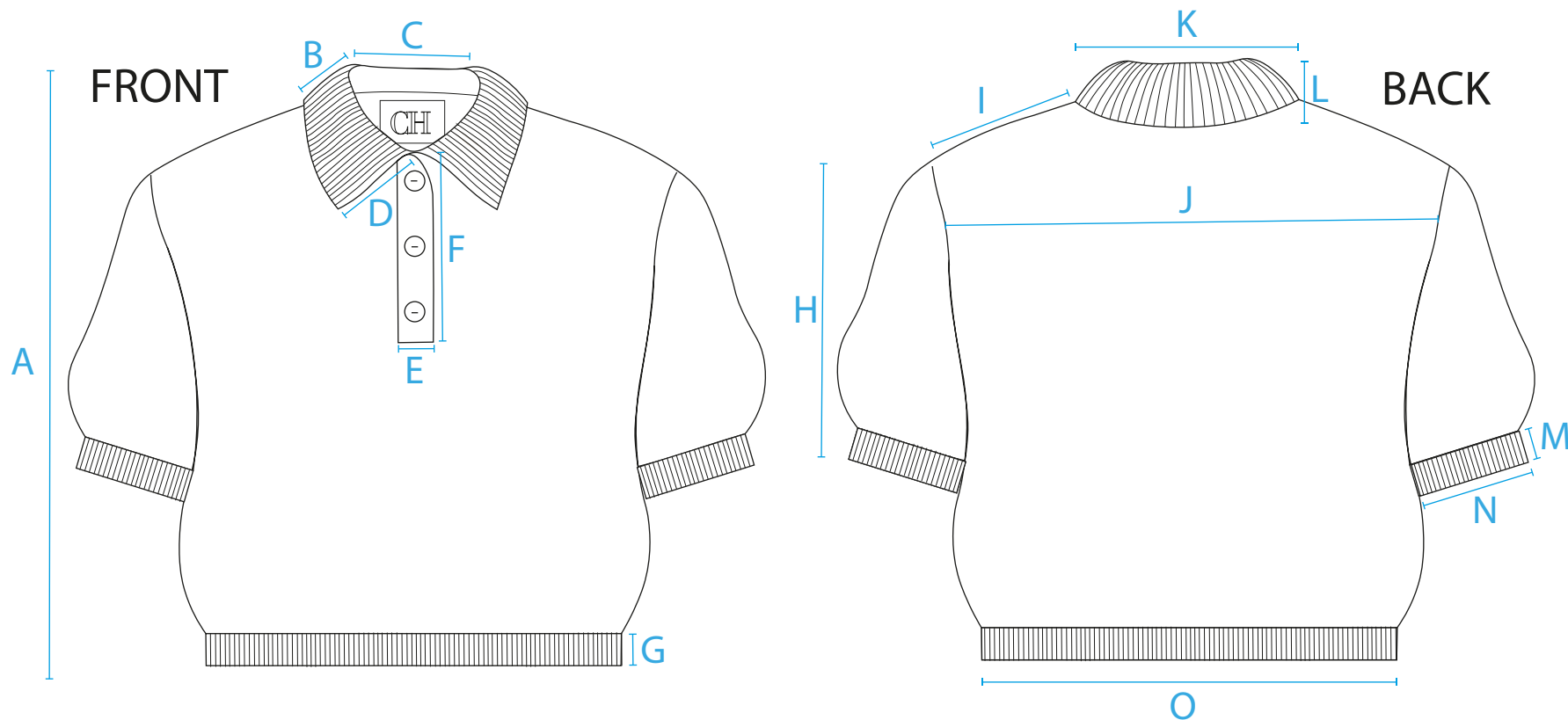
REF. NO: TP_01

LOOK 1 · GARMENT 1

SIZE: M

TYPE OF GARMENT: KNITTED SHORT SLEEVED POLO SHIRT.

MEASUREMENTS:



A: 440MM

B: 50MM

C: 150MM

D: 90MM

E: 30MM

F: 120MM

G: 40MM

H: 300MM

I: 120MM

J: 390MM

K: 250MM

L: 50MM

M: 40MM

N: 130MM

O: 400MM

CH

CAROLINA HERRERA

COLLECTION: AVENOIR

SEASON: 2022

WOMENSWEAR KNITWEAR

REF. NO: TP_01

LOOK 1 · GARMENT 1

SIZE: M

TYPE OF GARMENT: KNITTED SHORT SLEEVED POLO SHIRT.

KNITTING STITCHES:

BODICE AND SLEEVES:

USE REGULAR STITCH LIKE EXAMPLE:

Gauge: 16

Yarn: Cashmere 100%

Color: Pantone 2527C



COLLAR, SLEEVE ENDS AND WAISTLINE:

USE 2x1 RIB STITCH LIKE EXAMPLE:

(create intarsia camo pattern specified on the next page).

Gauge: 12

Cashmere 100%

Camo Print explained on the next page



CH

CAROLINA HERRERA

COLLECTION: AVENOIR

SEASON: 2022

WOMENSWEAR KNITWEAR

REF. NO: TP_01

LOOK 1 · GARMENT 1

SIZE: M

TYPE OF GARMENT: KNITTED SHORT SLEEVED POLO SHIRT.

INTARSIA PATTERN IN THE ROUND:

